

Arthur McBride

Ballade

Musical notation for the first system of 'Arthur McBride'. The staff shows a melody in 3/4 time. The notes are: quarter note G4, quarter note A4, quarter note B4, quarter note C5, quarter note B4, quarter note A4, quarter note G4, quarter note F4, quarter note E4, quarter note D4, quarter note C4. There are two flats (Bb and Eb) and two accidentals (X and X) over the notes B4 and E4 respectively.

A a a X a a A a a X a a

5

Musical notation for the second system of 'Arthur McBride'. The staff shows a melody in 3/4 time. The notes are: quarter note C4, quarter note D4, quarter note E4, quarter note F4, quarter note G4, quarter note A4, quarter note B4, quarter note C5, quarter note B4, quarter note A4, quarter note G4, quarter note F4, quarter note E4, quarter note D4, quarter note C4. There are two flats (Bb and Eb) and two accidentals (X and X) over the notes B4 and E4 respectively.

C c c B b b A a a C c c

9

Musical notation for the third system of 'Arthur McBride'. The staff shows a melody in 3/4 time. The notes are: quarter note A4, quarter note B4, quarter note C5, quarter note B4, quarter note A4, quarter note G4, quarter note F4, quarter note E4, quarter note D4, quarter note C4, quarter note B3, quarter note A3, quarter note G3, quarter note F3, quarter note E3, quarter note D3, quarter note C3. There are two flats (Bb and Eb) and two accidentals (X and X) over the notes B4 and E4 respectively.

A a a F a a A a a X a a B b b

14

Musical notation for the fourth system of 'Arthur McBride'. The staff shows a melody in 3/4 time. The notes are: quarter note A4, quarter note B4, quarter note C5, quarter note B4, quarter note A4, quarter note G4, quarter note F4, quarter note E4, quarter note D4, quarter note C4, quarter note B3, quarter note A3, quarter note G3, quarter note F3, quarter note E3, quarter note D3, quarter note C3. There are two flats (Bb and Eb) and two accidentals (X and X) over the notes B4 and E4 respectively.

A a a C c c A a a A a a

Molly Malone

Ballade

Vers

Musical notation for the first system of 'Molly Malone'. The staff shows a melody in 3/4 time. The notes are: quarter note B4, quarter note A4, quarter note G4, quarter note F4, quarter note E4, quarter note D4, quarter note C4, quarter note B3, quarter note A3, quarter note G3, quarter note F3, quarter note E3, quarter note D3, quarter note C3. There are two flats (Bb and Eb) and two accidentals (X and X) over the notes B4 and E4 respectively.

mf

B b b A b b A b b

4

Musical notation for the second system of 'Molly Malone'. The staff shows a melody in 3/4 time. The notes are: quarter note B4, quarter note A4, quarter note G4, quarter note F4, quarter note E4, quarter note D4, quarter note C4, quarter note B3, quarter note A3, quarter note G3, quarter note F3, quarter note E3, quarter note D3, quarter note C3. There are two flats (Bb and Eb) and two accidentals (X and X) over the notes B4 and E4 respectively.

B b b G gm gm C c c A a a

The Irish Rover

Set Dance

mf

B b A b B b A b

3

B b A b D d C d C c F fm

Oh Danny Boy

A Londonderry Air

mp

B b F A C c C

3

C c G gm B b b B B b F A

6

D d d D C c B b C c C mf

The Irish Washerwoman

Double Jig

non legato

mf

C c B c C c B c B c C c B c C c

Detailed description: This system contains the first four measures of the piece. The music is written on a single staff in 6/8 time. It begins with a treble clef and a key signature of one flat (B-flat). The tempo/style is marked 'non legato' and the dynamic is 'mf'. The notes are: M1: B4, A4, G4, F4; M2: E4, D4, C4, B3; M3: A3, G3, F3, E3; M4: D3, C3, B2, A2. Chords are indicated below the staff.

5

f *mf*

C c B c C c B c B C c C c C

Detailed description: This system contains measures 5-8. Measure 5 continues the previous line. Measure 6: A2, G2, F2, E2; Measure 7: D2, C2, B1, A1; Measure 8: G1, F1, E1, D1. Measure 9: C4, B3, A3, G3; Measure 10: F3, E3, D3, C3; Measure 11: B2, A2, G2, F2; Measure 12: E2, D2, C2, B1. Dynamics are 'f' for measures 9-10 and 'mf' for measures 11-12. A crescendo hairpin is shown under measures 9-10.

9

C c B c C c B c B c C c B c C c

Detailed description: This system contains measures 13-16. Measure 13: A2, G2, F2, E2; Measure 14: D2, C2, B1, A1; Measure 15: G1, F1, E1, D1; Measure 16: C4, B3, A3, G3. Chords are indicated below the staff.

13

f *mf*

C c B c C c B c B C c C c c

Detailed description: This system contains measures 17-20. Measure 17: A2, G2, F2, E2; Measure 18: D2, C2, B1, A1; Measure 19: G1, F1, E1, D1; Measure 20: C4, B3, A3, G3. Dynamics are 'f' for measures 17-18 and 'mf' for measures 19-20. A crescendo hairpin is shown under measures 17-18.

Roddy McCorley

Air

mf

A a X a A a X a C c A a B b b B

Detailed description: This system contains the first four measures of 'Roddy McCorley'. The music is written on a single staff in C major, 4/4 time. It begins with a treble clef. The tempo/style is 'Air' and the dynamic is 'mf'. The notes are: M1: A4, G4, F4, E4; M2: D4, C4, B3, A3; M3: G3, F3, E3, D3; M4: C3, B2, A2, G2. Chords are indicated below the staff.

5

A a a A B b a A C c G gm A a a A

Detailed description: This system contains measures 5-8. Measure 5: A4, G4, F4, E4; Measure 6: D4, C4, B3, A3; Measure 7: G3, F3, E3, D3; Measure 8: C3, B2, A2, G2. Chords are indicated below the staff.

Nightingale

Waltz

mp

A a a X a a X a a A a a

5

X a a A a a X a a A^a A B b b

10

A b b B b b A a a A a a B b b

The Star Of The County Down

Air

f

G gm gm G B b a A G gm G gm a a A A

5

mf

G gm gm G B b a A G gm G gm gm gm G G

9

f

C c b B A a a A G gm G gm gm gm G G

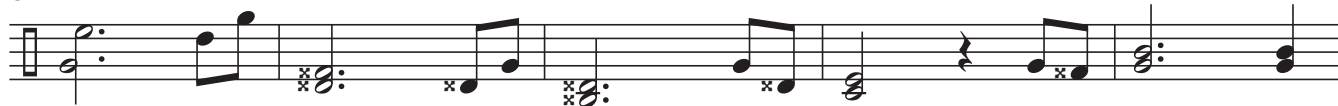
The Town I Loved So Well

Traditional



B b A b A a X a C c B c B b A b

5



D d C d C c B c C c B c B b b B b A b

10



A a X a C c B c B b A b D d C d

Beagáinín Éireannach

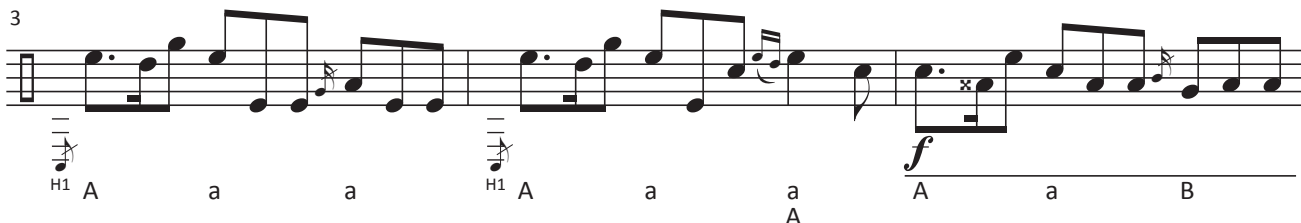
Do the Fiddler



Martina Kluge



A a B A a B



H1 A a a H1 A a a A a B



A a B H1 A a a b a A